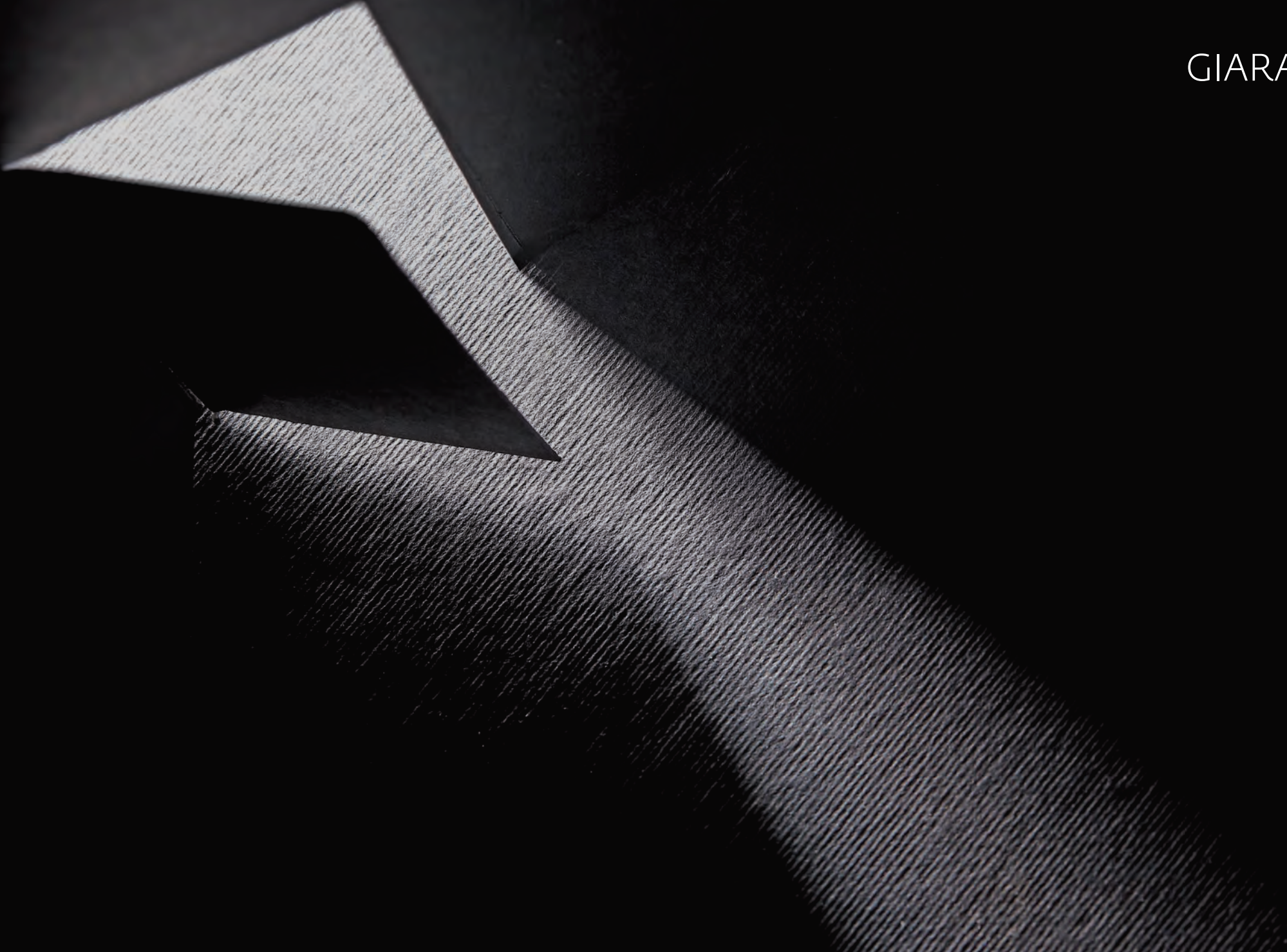
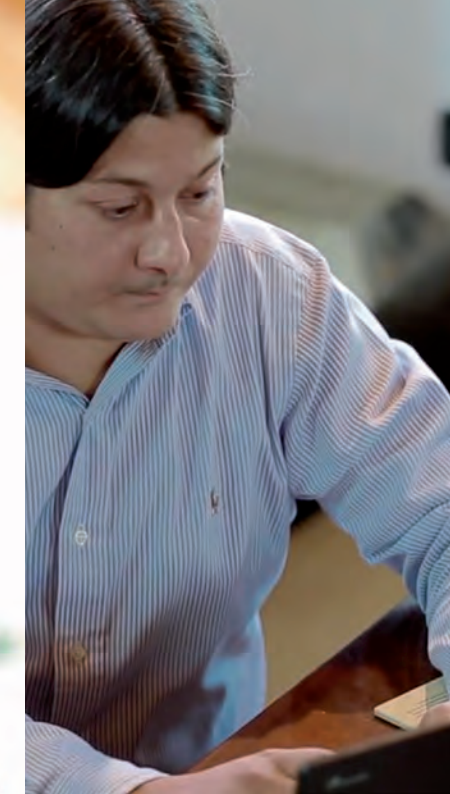


GIARA





The selection of our proposals:



for architecture:

CORTEXA
the new sign
of art-architectural design

**QUADRA
ONDA**
two ways of experiencing
bronze

for furniture accessories:

QUADRA
tradition meets modern

CHEMIN DE FER
a classic furniture piece

**TORCIGLIA
COUNTRY**
two classics that come alive
again with bronze

KLEIS

auteur design:

**SVING
LA
GRAFITE**

rds

**SKYLINE
OLA
DINAMICA
KAPPA
ARCO**



GIARA

GIARA is the fruit of the passion that Ruggero Frascio, Emanuela Pasini and their sons Giacinto and Raffaele dedicate to their activity: the design and production of handles and furnishing accessories.

The three collections GIARA ART DESIGN, KLEIS and RDS are a unique opportunity to learn about three worlds, three sensibilities, three ways to understand architecture, furniture, and furnishings with the GIARA line products becoming the ideal complement to add that detail for which every project reveals its greatness.


In this brochure we are introducing only a small and important series of products from the various collections, we invite you to request the complete catalogue and visit our website for a comprehensive and complete view of our proposals.



CORTEXA

A NEW SIGN
IN ART-ARCHITECTURAL DESIGN

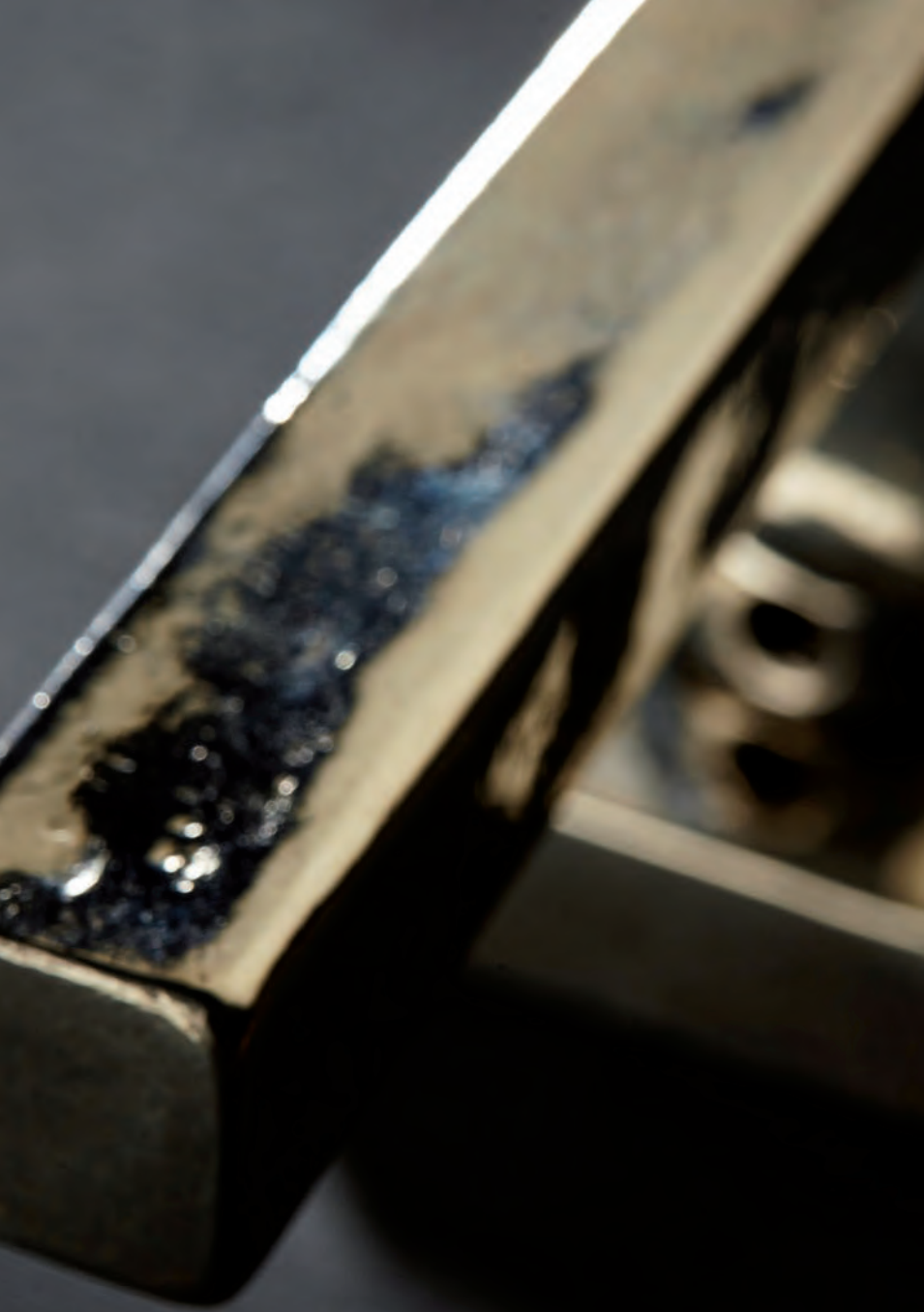
Inspired by the natural fissures in trees, **Cortexa** is a medium that inspires emotion in a collection of interior-design accessories in which molten metal takes pride of place. Revealing a powerful, intriguing character, the collection consists of handles and knobs with plates of various sizes. With **Cortexa**, each door gives personality to a room, creating a unique, warm atmosphere.





GIARA ART DESIGN
THE EMOTION OF A TIME-HONOURED
TRADITION

GIARA ART DESIGN is more than just a collection of handles: it is an example of in-depth research and profound respect for the age-old tradition of bronze-making, which comes to life in each piece. The beauty of the objects comes with the awareness that they are conveying a sense of eternity.



QUADRA

Quadra takes up the traditional forms of the early twentieth century. Its lightly beaten surface conveys the spirit of a handmade object in which each item reflects the beauty of its own, unique casting.



ONDA

In its firm grip, the contemporary design of **Onda** contains all the power of a surface with great personality: the metal emerges in all its strength, as though instantaneously frozen after melting.





QUADRA

Quadra Furniture accessories:
a complete series of handles of various
sizes and with various knobs.
They resume the square line with a
linear and classic design enriched by
the vibrating surface of bronze.





CHEMIN DE FER

Chemin de Fer: a line characterised by a knot crossing a small rod. The result is an elegant design that is original at the same time, a detail marking every piece of furniture.





TORCIGLIA

Torciglia: accessories that stand out with their enveloping and dynamic lines.





COUNTRY

Country: beautiful design for furniture with a taste of the past.





SVING

Dirk Ploos van Amstel creates transparent, open designs in a style that conveys the impact and immediacy of Pop cartoons. His creations reflect the conviction that users form stronger bonds with products when their function is plain to see. In other words, when function is an integral part of form. In the case of **SVING**, the key and lock mechanism is taken out from its hiding place inside the door panel and linked directly to the handle. The result: a clear, straightforward assembly with a balanced image.

DIRK PLOOS VAN AMSTEL DESIGNER

Dirk received his Master of Arts in User Interaction Design at the University of Utrecht, and in 2011 he set up his own studio in Maastricht. He is part of an academic research group that studies the behavioural changes brought about by the persuasiveness of design. His studio received the Biennale Interieur Award in 2014. His works appear in the prestigious Star Product Designers catalogue of HarperCollins, New York.



KLEIS

KLEIS:
AUTEUR DESIGN

The KLEIS collection of handles reaffirms its original mission: a centre of excellence for ideas and actions, an ideal laboratory where design and project development convey the same values as the product. A project backed by such names as Philippe Starck, Alvaro Siza, Riccardo Dalisi, Enrico Baleri, Roberto Sambonet, Hannes Wettstein, Oscar Tusquets Blanca, Elias Segui.... Giara is continuing its research and innovation to produce items that will continue to further the conceptual evolution of design.

www.kleisdesign.it



FABRIZIO CESTER
ARCHITECT

Born in Venice in 1960, he has been an independent professional since 1995. He initially worked on conservative restoration projects for public commissions but in the nineties he began to take an interest in interior architecture, industrial design, yacht design, trade-fair stands and classic furniture, reaping international honours. As a designer, he has worked with world-renowned industries, for which he has designed objects and technical items for interior architecture.



LA

The very essence of design, based on the idea of a blade of metal that curves into an ergonomic grip for the hand. Its torsion conveys a resolute, dynamic personality.

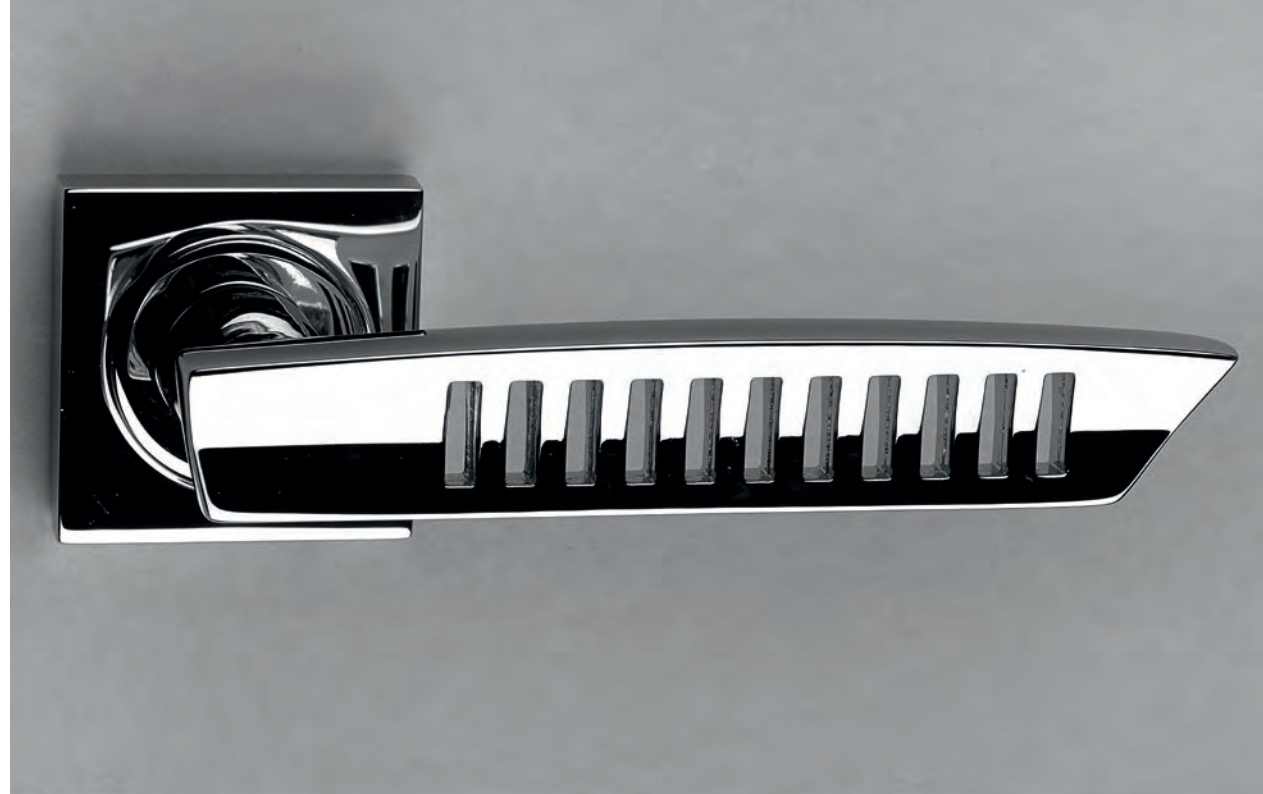
MARCELLO CUTINO
DESIGNER

Marcello graduated in Industrial Design from the Politecnico University of Milan. In 1980 he set up Studio BCF, concentrating on three main areas: design, corporate communication and image. He has received many national and international honours (Design Index, Honourable Mention from the Compasso d'Oro and a nomination for the Delta Award in Spain). In a career spanning over thirty years, he has built up huge expertise in the bathroom and kitchen furnishing sectors.

**GRAFITE**

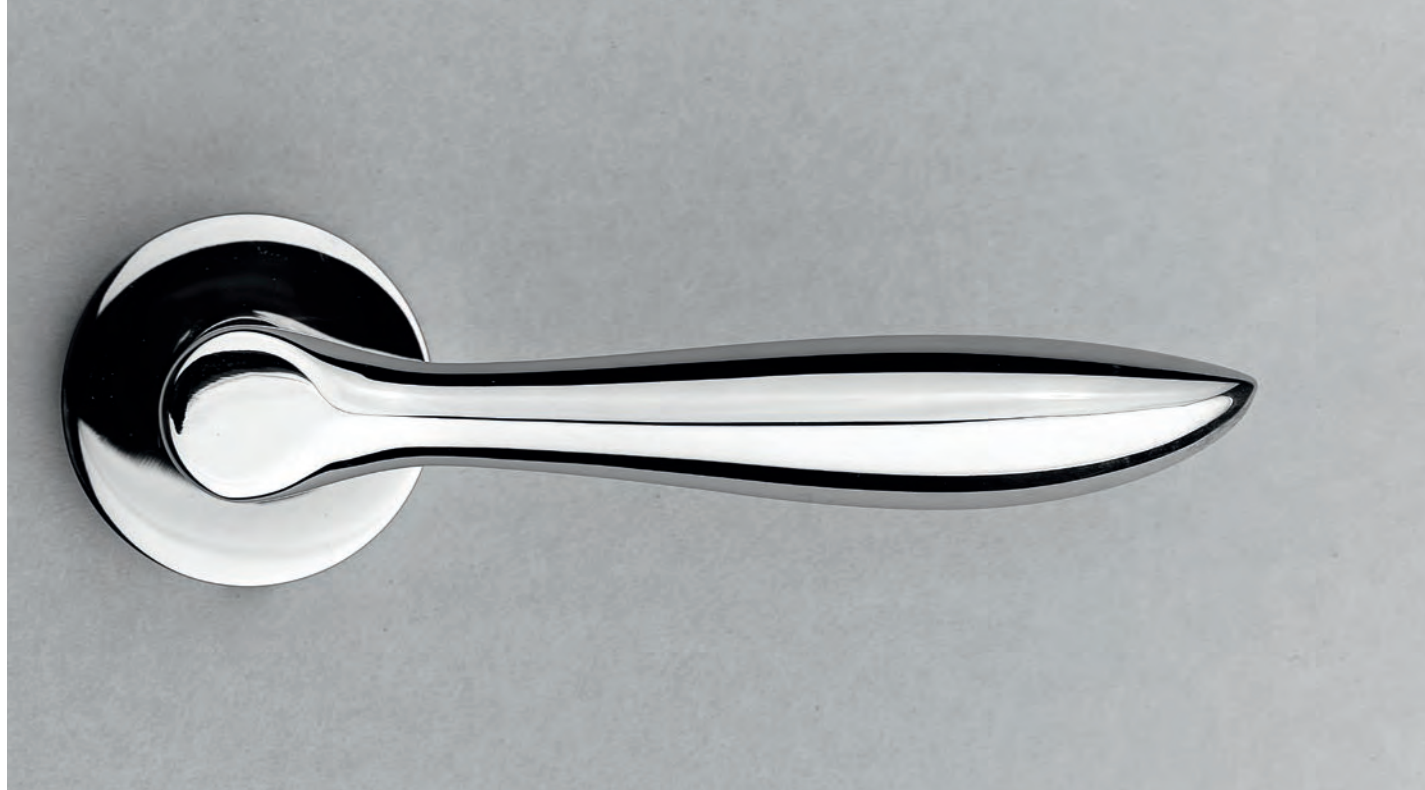
The distinctive feature of this handle is the node between the square pivot and the angular blade that forms the grip area. With its contrast of elements and materials, this handle is a model of discipline while also conveying a precise architectural style.





SKYLINE

Skyline reflects the most daring architectural creations – those that achieve the greatest heights using the most advanced technologies. Its design is one of simplicity and beauty, with its grid dematerialising the volume, as glass does to a skyscraper, and its grip turning into a suspended arch.



RDS:
A WORLD OF HANDLES

A range of handles with a focus on form and beauty of creation. Modelling is an essential part of creativity in a number of classical and contemporary architectural contexts, as well as in interior design, in the most authentic "Made in Italy" tradition.

OLA

With a grip that is at once dynamic and soft, **Ola** is characterised by the wave pattern at the end, making it the perfect accessory for both classical and contemporary interior design.





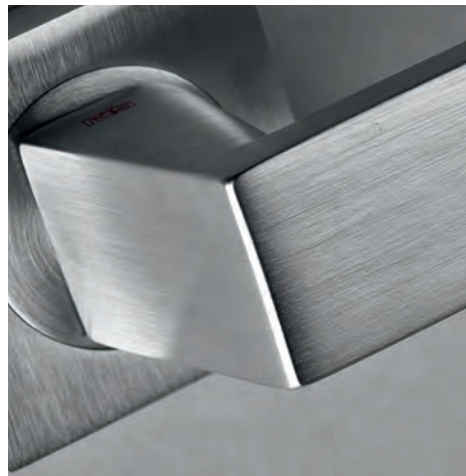
DINAMICA

Where one would expect straight lines one finds inclinations, creating a modern mood that is one of dynamism, energy and movement.



KAPPA

A blade curved to enhance a vigorous, dynamic image, forming an essential feature of its structure.



ARCO

A handle that combines the dynamism of the arch with a fusion of rigorous volumes for the hand.





KLEIS



GIARA S.r.l. - Via San Lino, 47 - 25071 AGNOSINE (BS) - Italy
Tel. +39.0365.860539 - Fax +39.0365.869366 - e-mail info@giara.info
www.giara.info - www.kleisdesign.it - www.rdshandles.it



Sistema di gestione
ISO 9001:2015 e ISO 14001:2015